

The "Database choice" source

This source type allows the user in operating mode to select, for a database field, a value from a drop-down list which contains the different values of another table of the same database. The "Database choice" may follow the relationships between the tables.

This kind of source may only be used with the Professional or Expert version of the software, as the Standard version doesn't provide any access to databases.

If you're using a Standard version of the software, you may check out this feature by enabling the Demonstration mode from the "Help" menu.

Want to see how it works?

If you installed eMedia Card Designer with the sample cards, open (while in operating mode) the sample located in the *Color printer – English\Enhanced cards\Corporate application* folder.

Want to design such a card?

First, create your database. This one will contain the main table, with the card holders, and a second table, which will contain all the possible values of a particular field.

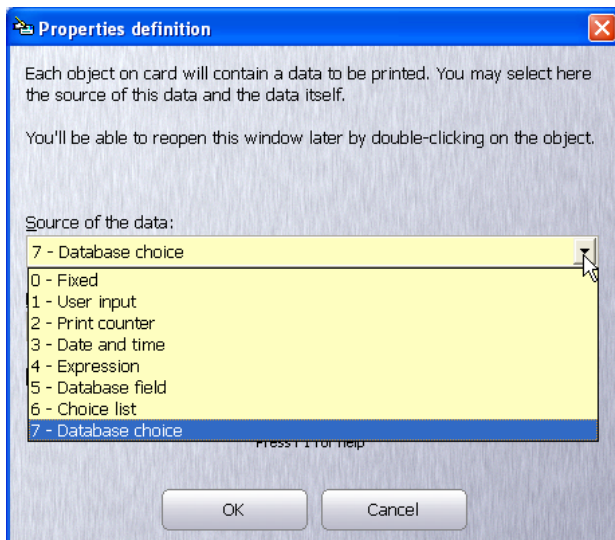
In this example, the "Department_Labels" table will contain all the possible values for the working department of the card holders.

Your main table must contain a field where the department number or name will be stored.

You may create many secondary tables. For instance: one for the departments, one for the authorizations, one for the buildings locations, etc. Remember to create a field in the main table for each secondary table.

DEPARTMENT	LABEL
1	Management
2	Customer Department
3	Marketing Department
4	Engineering Department
5	Manufacturing
6	Security
0	

Now, create a blank card. Link it to the main table of your database. Create a text object or a barcode object and set its "Source" property to "Database choice".

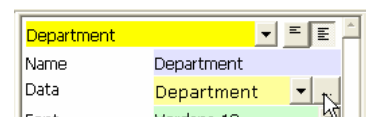


While creating a text object or a barcode object, the "Properties definition" dialog box appears.

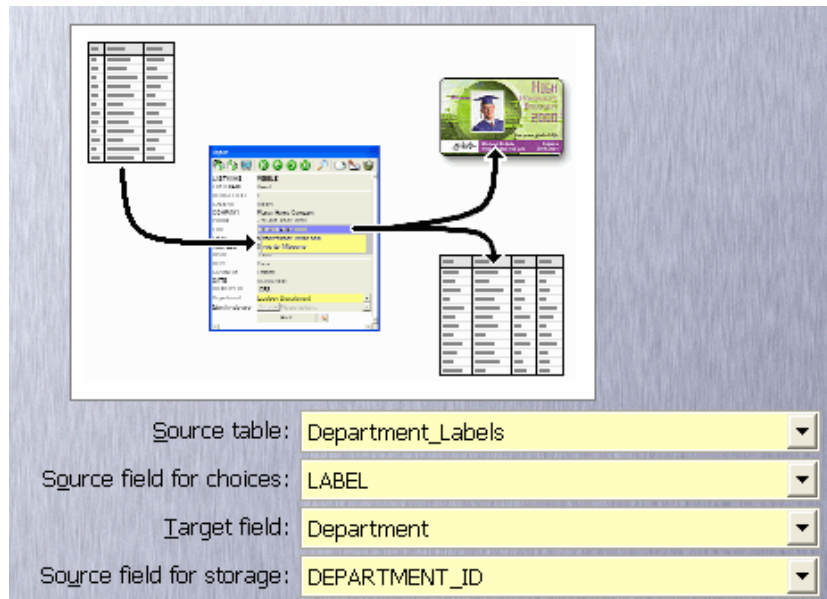
You may also double-click on an object to make the dialog box to appear.

Select in "Source of the data" the value: "7 - Database choice".

Now, we'll set the "Data" property to define where the list is to be taken from, where the selected value is to be stored and what kind of value is to be stored. For this purpose, click on the "..." button on the right of the "Data" property to make the configuration dialog box to appear.



The four combo-boxes in this dialog box will help you to define these options. An help is available there at any time on the screen or by pressing the F1 key.



Source table contains the name of the secondary table, that contains the list of possible values.

Source field for choices contains the name of the field in the secondary table in which the possible values are stored.

Target field contains the name of the field in the main table in which the value selected by the user will be stored.

Source field for storage contains the name of the field in the secondary table from which the value stored in the main table will be read. If you select here the same field than for "Source field for choice", the selected value will be stored in the main table. If you select another field, the value of this other field will be stored. The target field, then, can be a foreign key.

Want to check it out?

Once your card designed, save it then switch to operating mode. The "Input" window now contains the database fields. Modify a record, or create a record, and see how the "Department" input box is now a combo-box.

Open the combo-box and select the working department of the employee. Save the record, print out the card, everything's right now: you don't have to enter the department name anymore.

Check out the main table contents: the department field now contains the ID of the department. This is a foreign key over the Department_Labels table.

Input	
Last name:	MILLER
First name:	Michael
Job title:	Assistant
Department:	Engineering Department
Phone number:	Management
Fax number:	Customer Department
e-mail address:	Marketing Department
Creation date:	Engineering Department
Identity #	Manufacturing
Card printed on:	Security
Card printed:	0
Expiration date:	13/11/2005